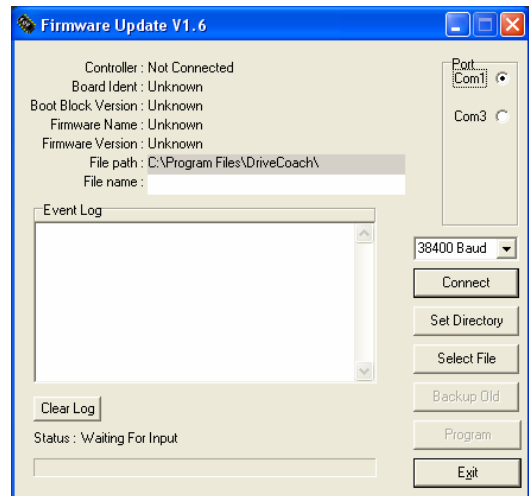


# FIRMWARE UPDATE PACKAGE FUP32

## Features / Specifications :

- Used to update the firmware of Convertteam products
- Suitable for use with Microsoft Windows '95, 98, 2000, ME, NT 4 and XP operating systems
- Suitable for use with ALSPA DC3000, GD3000E & MV3000e Drives and GEM80 Programmable Controllers
- Supports up to 8 serial ports



## Related Documents

T1679 ALSPA MV3000e Software Technical Manual.

## Instructions for Use

The following procedure is concerned with updating the firmware of ALSPA MV3000e AC Drives. [Note: The Firmware Update Package can also be used to update the firmware of DC3000 DC Drives, GD3000E AC Drives and GEM80 Programmable Controllers. For information on updating these products, please refer to your local technical support centre.]

## Installing the Firmware Update Application Program FUP32

The firmware upgrade application is supplied either on a CD-ROM or as a '.zip' file via e-mail.

### CD-ROM

Place the CD-ROM in your PC's CD-ROM drive and if 'Autorun' is enabled, follow the installer instructions to install the firmware upgrade application on your computer. Otherwise go to the FUP32 directory on the CD-ROM and run Setup.exe, subsequently following the installer instructions

### E-mail

From the FUP32 'zip' file extract all the files to a temporary directory on your hard disk, run Setup.exe and follow the installer instructions.

### General

Either method installs the firmware upgrade application to your PC. The default directory for installation is C:\Program Files\DriveCoach\FUP32. The program can be run either from the Start menu (ALSPA => FUP32) or the FUP32 shortcut that the installation places on your desktop.

# FIRMWARE UPDATE PACKAGE

## Updating the Firmware of ALSPA MV3000e MicroCubicle™ and DELTA AC Drives

Before upgrading the drive's firmware back up the parameter user edits by

- a) Using the ALSPA Drive Data Manager™  
navigate to parameter P1.31 and set the value = 2  
Navigate to P99.16 - 'Backup Parameters'. Set the value = 4 - 'Save to Keypad'

OR

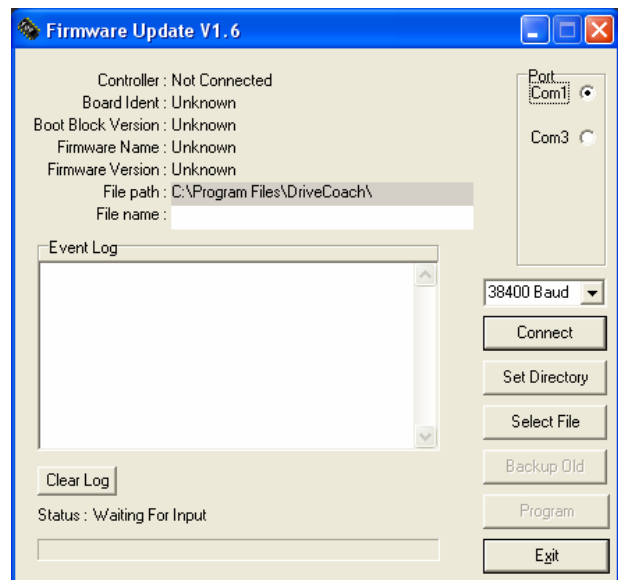
- b) Using ALSPA Drive Coach  
File =>'Get Data From Drive' save the drive's parameter set as a \*.dri file on a PC.

Enable the Firmware Download by navigating to P99.12.

Set the value = 1.

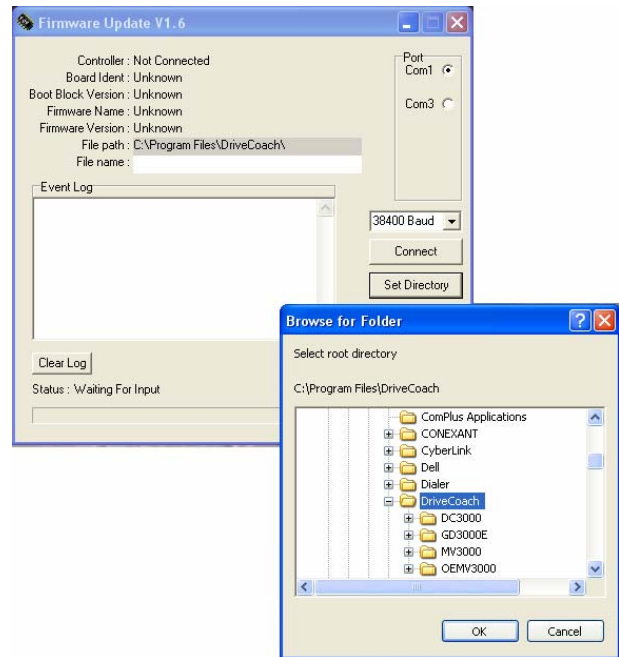
The ALSPA Drive Data Manager™ will report 'ALSPA MV3000e Keypad link error' and the drive will trip. Remove the ALSPA Drive Data Manager™ and connect the PC to the 9-way D Type connector on the front of the drive using a straight through RS232 9-way lead. (Recommended lead - MVS3001-4001 or GDS1009-4001)

1. Run the firmware upgrade application FUP32
2. Ensure the drive controller is powered up. This is either by applying the mains supply or by applying 28V dc (0.5A) to TB2 on the drive.



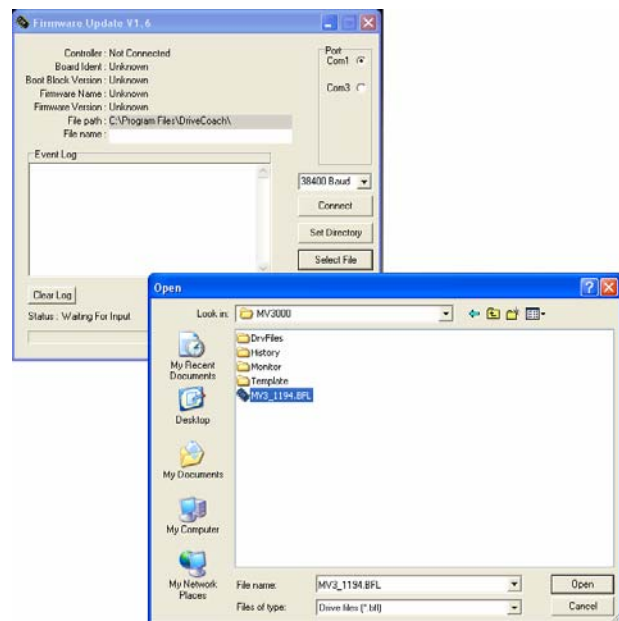
# FIRMWARE UPDATE PACKAGE

- Using the 'Set Directory' button select the directory in which the firmware update files are stored on your computer if different from the installer default directory



- Select the MV3000e firmware update file to upgrade the ALSPA MV3000e

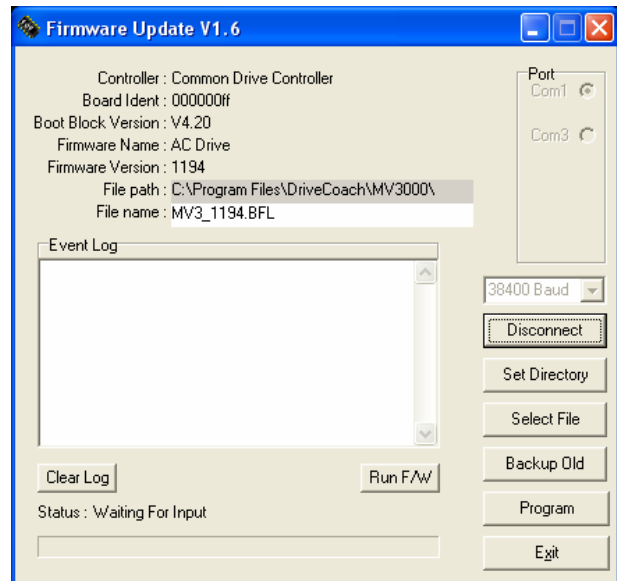
These files have the extension .bfl and the firmware version is reflected in the file name e.g. MV3\_1101.bfl is for firmware version V11.01



# FIRMWARE UPDATE PACKAGE

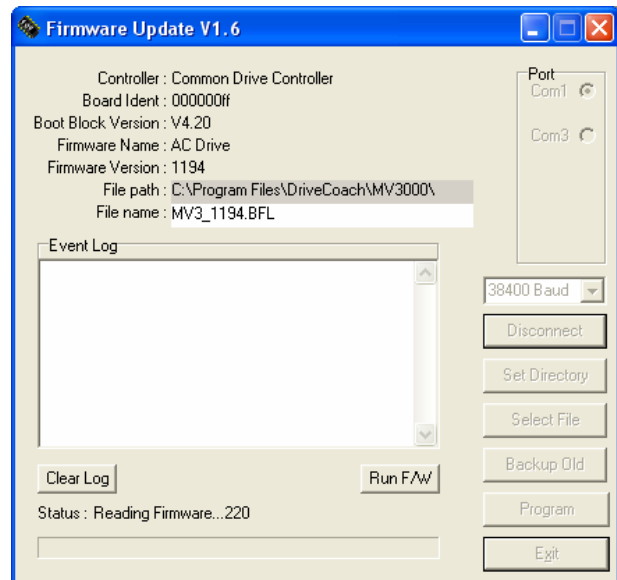
5. Select the COM port on your PC to be used. The firmware upgrade application indicates (up to 8) the serial ports on your PC that are available for this operation
6. Press 'Connect' and the firmware update application screen should confirm the connection by showing

Controller: Common Drive Controller  
Boot Block Version: V2.00, V3.00, 4.00 or 4.20  
Firmware Name: MV3000C or AC Drive  
Firmware Version: xxxx (the version currently in the drive)



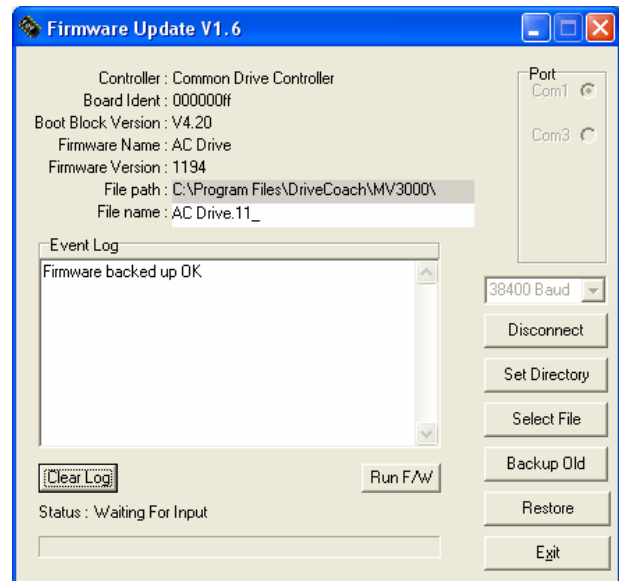
7. Before installing the new firmware it is strongly recommended that the old version of firmware in the drive be backed up to perform this operation press 'Backup Old'.

The old firmware will be saved to your PC as a '.bak' file. The operation takes some minutes and the Status of the operation is indicated as 'Reading Firmware .....xxxx'

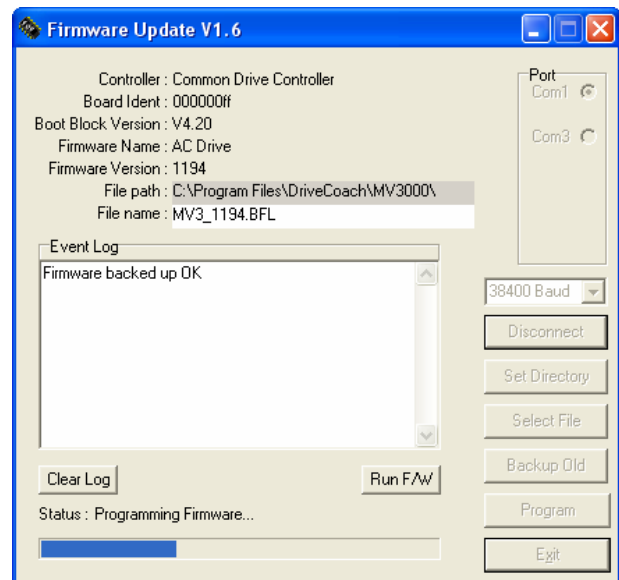


# FIRMWARE UPDATE PACKAGE

8. The Event Log shows when the operation is complete.
9. Using 'Select File' select the new firmware file MV3\_XXXX.bfl



10. Upgrade the drive firmware by using 'Program'
- This operation can take a number of minutes and a status bar shows progress.



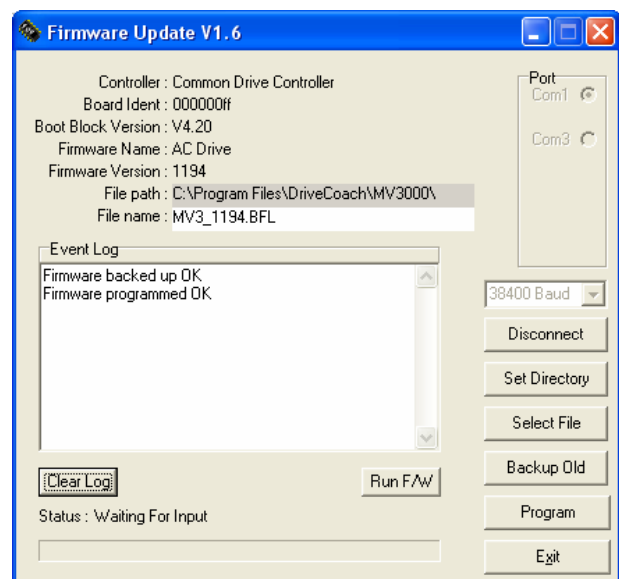
11. Completion of the firmware upgrade is indicated in the firmware upgrade application's Event Log.
12. Confirm the firmware has successfully loaded, by:

Either

1. Power the drive off
2. Disconnect the PC and re-connect the Drive Data Manager™
3. Power the drive on

OR if the Boot Block Version is 4.02 or later press the 'Run F/W' button

2. Disconnect the PC and re-connect the Drive Data Manager™
3. Power the drive on
4. Navigate to P1.31 and set the value to "2"



# FIRMWARE UPDATE PACKAGE

5. Navigate to P99.04. This parameter will reflect the firmware version.
6. Navigate to P99.17 – 'Restore Defaults' and set = 1. This will return the drive to its factory defaults

The firmware update procedure is complete.

Restore the user edits saved at the beginning of this procedure.  
Either

Recall the user edits by:

1. Navigate to P1.31 and set the value to "2"
2. Navigate to P99.16. Set the value to "5" – 'Recall Keypad'  
[Note: P99.16 auto resets to "0", when the recall is complete]

Or

Reconnect the PC and  
Using ALSPA Drive Coach 'File' => 'Send Data To Drive'  
Send the saved the drive's parameter set to the drive

To remove the Firmware Update Package from your computer use 'Control Panel' => 'Add/Remove Programs'

## Customer Services

Please refer to your local technical support centre if you have any queries about this product.

# FIRMWARE UPDATE PACKAGE

## Converteam

### France

9, rue Ampère  
91345 Massy Cedex  
Sales Tel: +33 (0) 8 25 02 11 02  
Support Tel (International):  
+33 (0) 3 84 55 33 33  
Support Tel. (National):  
08 25 02 11 02

### Germany

Culemeyerstraße 1  
D-12277 Berlin  
Sales Tel: +49 (0) 30 74 96 27 27  
Support Tel (International):  
+49 (0) 69 66 99 831  
Support Tel (National):  
01 80 3 23 45 72

### UK

West Avenue, Kidsgrove  
Stoke-on-Trent, Staffordshire, ST7 1TW  
Sales Tel: +44 (0) 1782 781010  
Support Tel: +44 (0) 1782 781010

### USA

610 Epsilon Drive  
Pittsburgh, PA 15238  
Sales Tel: +1 412 967 0765  
Support Tel: +1 800 800 5290

**CONVERTEAM**  
THE POWER CONVERSION COMPANY

© Converteam UK Ltd - 2006 - Publication No. T1975EN.  
The logo Converteam and their frameworks are trademarks and service trademark applications of  
Converteam.